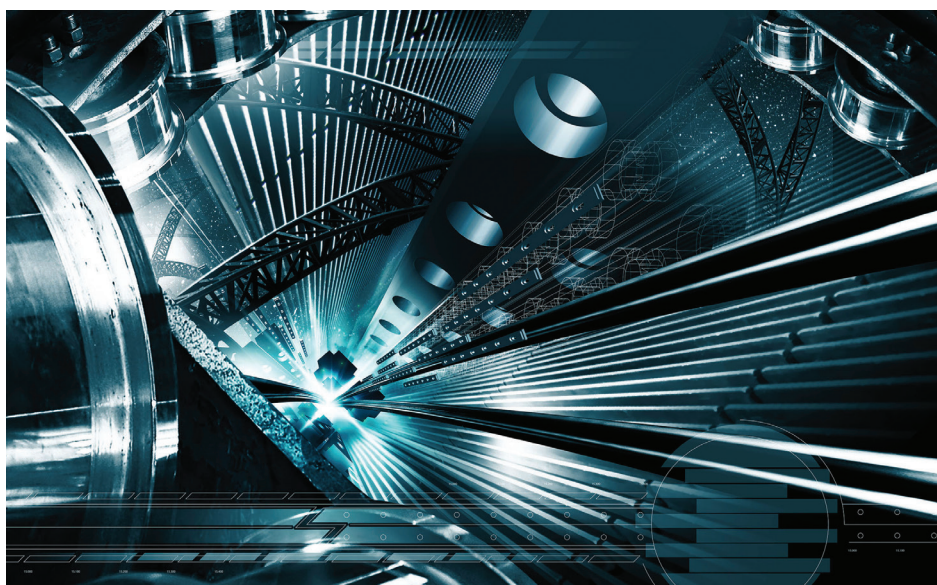


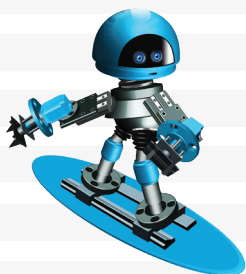
# INDUSTRIAL | SLIDEWAY

## HiTEC® 510

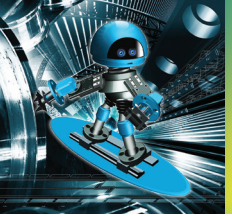
Slideway Oil Additive Package



Multifunctional Additive Delivering Excellent Frictional and Cutting Fluid Performance



 **Afton**  
CHEMICAL  
Passion for Solutions®



## HiTEC® 510 Slideway Oil Additive Package

Multifunctional Additive Delivering Excellent Frictional and Cutting Fluid Performance

### Key Performance Benefits

HiTEC® 510 additive is an ashless, multifunctional additive for the formulation of premium performance slideway oils, hydraulic fluids and industrial gear lubricants.

HiTEC® 510 additive enables the formulation of oils with outstanding cutting fluid compatibility and imparts wear, oxidation and corrosion resistance to lubricants. The incorporation of a highly effective friction modifier ensures the correct frictional characteristics for machine tool slideway performance. The product has a mild odour.

HiTEC® 510 additive benefits include:

- Outstanding cutting fluid compatibility
- Excellent frictional characteristics
- Potential for energy savings
- Lubricant user benefits resulting from reduced inventories
- Multifunctional performance for slideway, hydraulic and industrial gear applications
- Hydraulic performance which includes excellent wet/dry filterability and Brugger performance to meet the hydraulic requirement of Müller Weingarten

### Recommended Dosage

The recommended dosage for HiTEC® 510 additive is 2.25% wt. Where tackiness is required, the addition of HiTEC® 151 or HiTEC® 152 additive at up to 2.0% wt. is recommended. Treat-rate may vary depending on base stock. Please contact your Afton Chemical representative for specific recommendations.

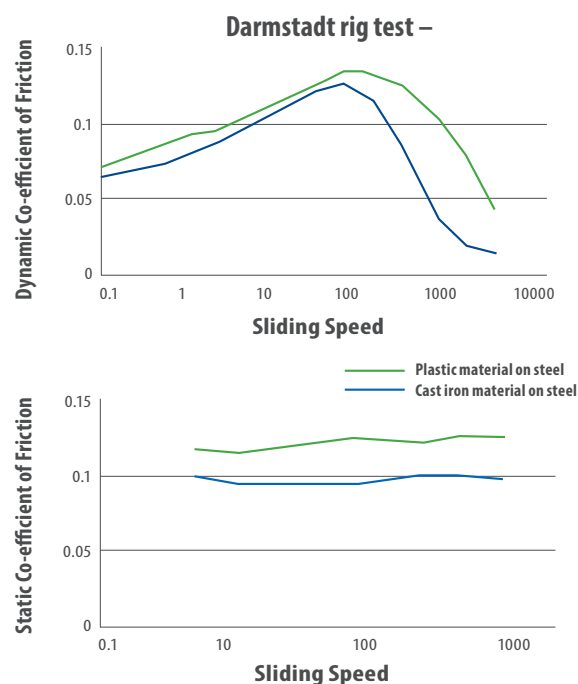
### Typical Characteristics

Appearance:	Brown oily liquid
Density at 15°C, g/ml:	0.963
Density, lbs/gal:	8.04
Specific Gravity at 15.6/15.6°C:	0.965
Flash Point, °C (PMCC):	75 min.
Viscosity at 40°C, mm²/s:	55

### Handling Information

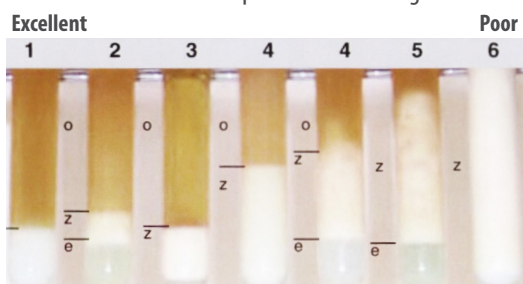
Max Handling Temp: 40°C (104°F)  
Shelf Life: 18 months at 10-30°C

### HiTEC® 510 Additive Delivers Excellent Frictional Performance



### HiTEC® 510 Additive Delivers Outstanding Cutting Fluid Compatibility

SKC Coolant Separation Test Rating



Cutting Fluid	1 Hour	1 Day	1 Week
Sarol 471 EP	1	1	1
Avilube Matacool BLU	2	1	1
Blasocut 200 CF	1	1	1
Hysol 30FF	2	1	1
HiSpeed 400	1	1	1
Hebrolub 923 LS	1	1	1
Multan 97-10	1	1	1
Hocut M 724	5	4	4
Mobilcut 140	1	1	1
Novamet 900	4	2	2
Rhenus FU750	1	1	1
Sitala A 400	1	1	1