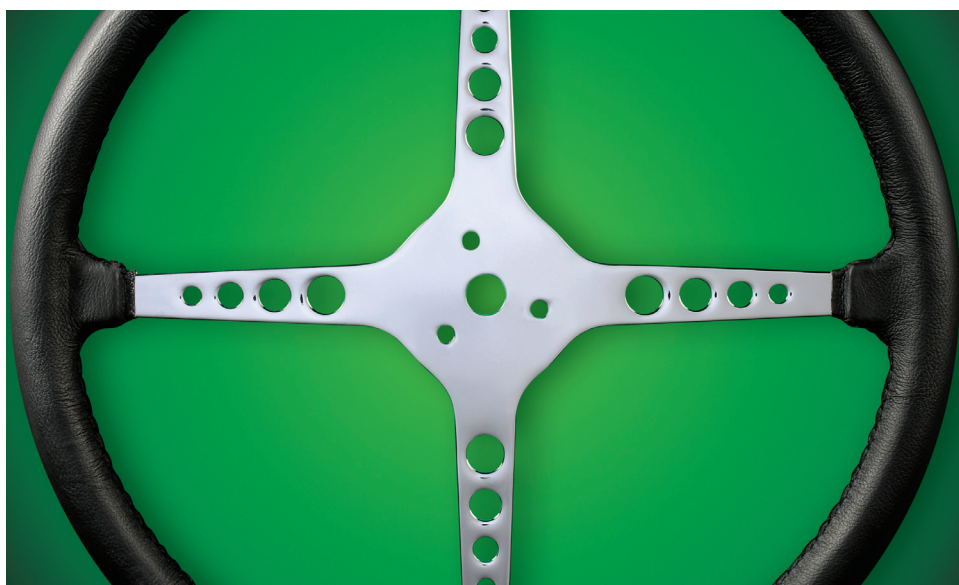


# FUELS

## HiTEC<sup>®</sup> 6590

Fully Synthetic Gasoline Performance Additive



Formulated For All Gasoline Engine Platforms Including DIG  
and Conventional PFI Intake Systems

# HiTEC® 6590 Fully Synthetic Gasoline Performance Additive

Formulated For All Gasoline Engine Platforms Including DIG and Conventional PFI Intake Systems

## Application

HiTEC® 6590's patented technology was designed to meet the challenges of direct injection engine technology, while continuing to deliver excellent performance in the traditional port fuel injection platform. A fully scalable additive with EPA and TOP TIER™ certification, HiTEC® 6590 delivers powerful keep-clean and clean-up performance at cost effective treat rates.

## Key Performance Benefits

- Helps to keep clean and clean-up intake valves and injectors, which can result in:
  - Optimized fuel economy
  - Maximized power and acceleration
  - Reduced emissions
- Patented for use in DIG engines (U.S. Patent 7,491,248)
- Up to E20 ethanol compatible
- Excellent combustion chamber deposit control
- Good demulsibility
- A-rating corrosion protection
- Low viscosity for easy handling

## Recommended Dosage

HiTEC® 6590 is EPA, LAC Final Rule and TOP TIER™ certified. Please contact your Afton Chemical representative for specific recommendations.

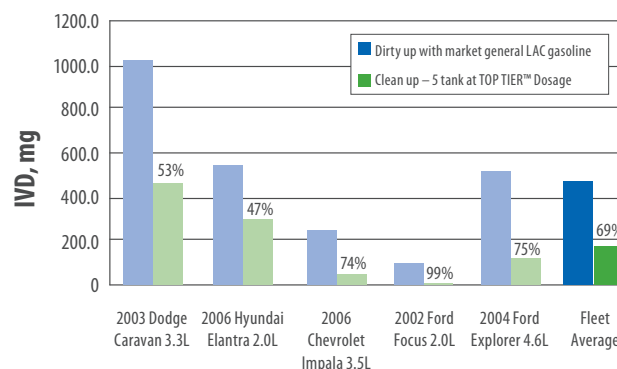
## Typical Characteristics

Appearance	Amber liquid
Density, lbs/gal.	7.58
Specific Gravity @ 15.6/15.6°C	0.9099
Flash Point, °C (PMCC)	44 min.
Pour Point, °C	-50 max.
Viscosity @ 40°C, cSt	12
Viscosity @ -20°F, cSt	400 max.

## Handling Information

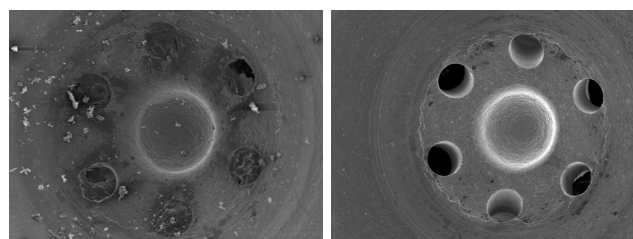
Max Handling Temp: 35°C (up to 80°C under nitrogen)  
 Shelf Life: 24 months @ ambient temperature

## Real World Intake Valve Deposit Clean-up Evaluation



Excellent performance in PFI engines as shown by the 69% fleet average clean-up of intake valve deposits.

## Clean Injectors = Better Engine Performance



Base Fuel

HiTEC® 6590

## Clean Valves = Better Engine Performance



Base Fuel

HiTEC® 6590