

DRIVELINE

**Axcel<sup>®</sup> S**

Automotive Gear Oil Additive Package



Standard Tier, for Axles and Transmissions, with ZF and MAN Approvals

 **Afton<sup>®</sup>**  
CHEMICAL  
Passion for Solutions™

# Axcel<sup>®</sup> S Automotive Gear Oil Additive Package

Standard Tier, for Axles and Transmissions, with ZF and MAN Approvals



## Key Performance Benefits

Axcel<sup>®</sup> S additive is an automotive only gear oil additive. that offers strong performance at a highly competitive treat-rate. Axcel<sup>®</sup> S additive provides:

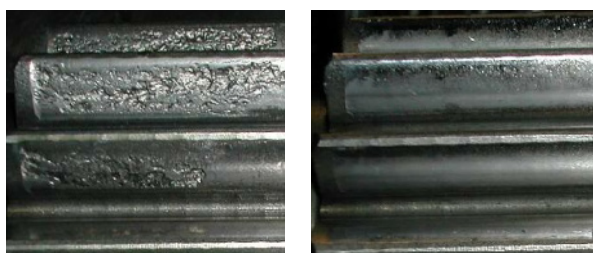
- Lowest treat-rate for GL-5, ZF and MAN performance
- Unique MAN and ZF approval - MAN 342 M2 (160,000km), ZF TE-ML 12E (bus axles)
- Demonstrates excellent cleanliness due to its strong oxidative performance
- Unique 'booster' approach for MB, Scania, Limited Slip, MTF and MIL-E approvals; Industrial and Top Tier performance

## Axcel<sup>®</sup> Family Benefits

The new Axcel<sup>®</sup> family of core and additive boosters offers:

- Top treats to a range of applications at competitive treat-rates
- Reduced inventory control
- Improved plant utilisation
- Flexibility to meet peak demand
- Security and confidence from a product in a family of gear additives with an extensive history of trouble-free performance worldwide

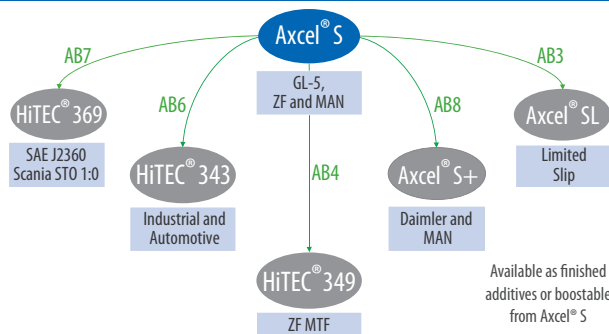
### Axcel<sup>®</sup> S provides superior protection against pitting and wear in ZF axle load test



Competitor

Axcel<sup>®</sup> S

### The Axcel<sup>®</sup> Family of core and additive boosters



## Recommended Dosage

Automotive	
4.0% wt.	API GL-5 (eqv. MIL-L-2105D), MAN 342 M2 (160,000 km drain), ZF TE-ML 05A, 7A, 12E, 16,B, C & D, 17B, 19B, 21A, NATO O-226
2.0% wt.	API GL-4

Treat-rates may vary depending on base stock.

## Typical Characteristics

Appearance:	Clear Yellow Liquid
Density at 15°C, g/ml:	1.098
Flash Point (PMCC), °C:	92
Kinematic viscosity at 40°C, mm <sup>2</sup> /s:	8.4

## Handling Information

Max Handling Temp: 40°C  
 Shelf Life: 24 months @ 25°C  
 6 months @ 40°C

## Approvals

Axcel <sup>®</sup> S	Approvals																										
	Axle	API GL-5	MAN 342 M1	MAN 342 M2	ZF 05A	ZF 07A	ZF 08	ZF 12E	ZF 16B-D	ZF 17B	ZF 19B	ZF 21A	Scania STO 1:0	Volvo 1273.10	SAE J2360	Industrial	NATO O-226	MTF	API GL-4	API MT-1	MAN 341 Z1	MAN 341 Z2	ZF 02A	ZF 02B	ZF 17A	Mib 225.5	
	●	●	●	●	●	●	●	●	●	●	●	●	●	●	●	●	●	●	●	●	●	●	●	●	●	●	●

● Suitable for use   ● Have approval   ● Seeking approval  
 1 Requires top treat   2 Spec now deleted   3 ZF do not list approved product for these specifications