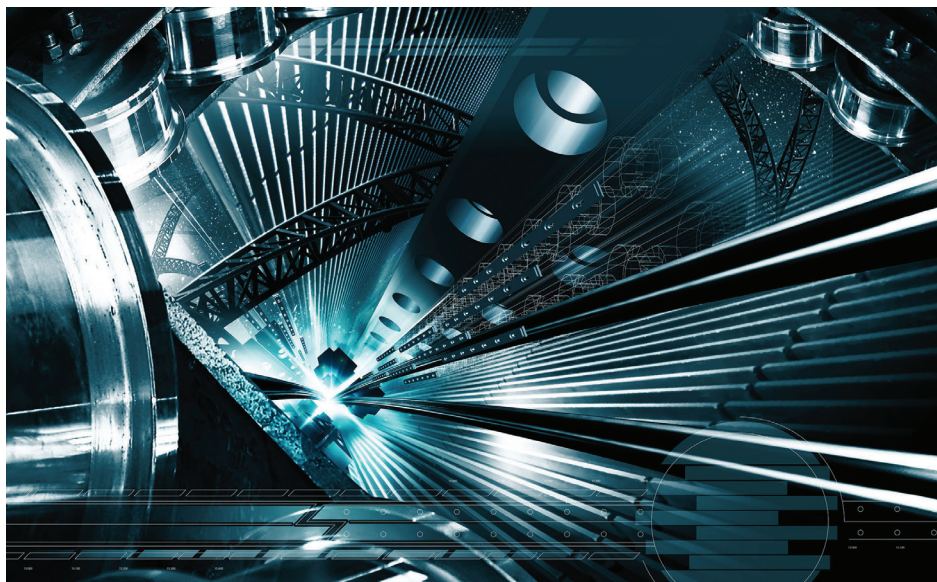


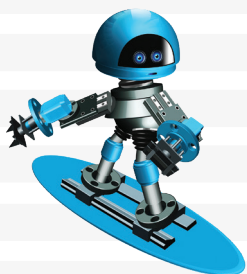
INDUSTRIAL | SLIDEWAY

HiTEC[®] 510A

Slideway Oil Additive Package



Multifunctional Additive Delivering Excellent Frictional and Cutting Fluid Performance



 **Afton**[®]
CHEMICAL
Passion for Solutions[®]



HiTEC® 510A Slideway Oil Additive Package

Multifunctional Additive Delivering Excellent Frictional and Cutting Fluid Performance

Key Performance Benefits

HiTEC® 510A additive is an ashless, multifunctional additive for the formulation of premium performance slideway oils and hydraulic fluids. HiTEC® 510A additive enables the formulation of oils with outstanding cutting fluid compatibility and imparts wear, oxidation and corrosion resistance to lubricants. The incorporation of a highly effective friction modifier ensures the correct frictional characteristics for machine tool slideway performance. The product has a mild odour.

When blended with suitable base stocks, HiTEC® 510A additive benefits include:

- Outstanding cutting fluid compatibility
- Excellent frictional characteristics
- Potential for energy savings
- Lubricant user benefits resulting from reduced inventories
- Multifunctional performance for slideway and hydraulic applications
- Meets Fives stick-slip requirement

Recommended Dosage

The recommended dosage for HiTEC® 510A additive is 2.25% wt. Where tackiness is required, the addition of HiTEC® 151 or HiTEC® 152 additive at up to 2.0% wt. is recommended. Treat-rate may vary depending on base stock. Please contact your Afton Chemical representative for specific recommendations.

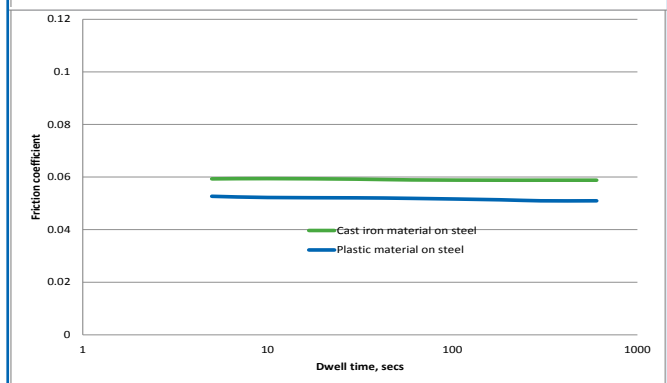
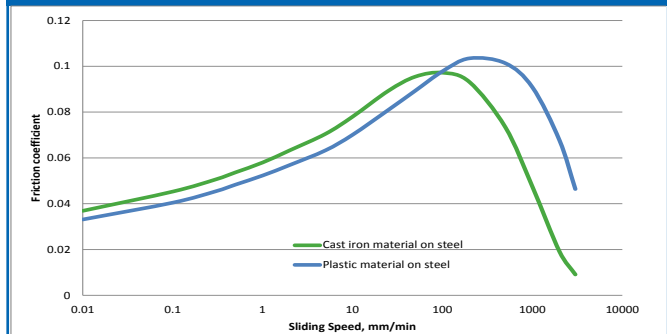
Typical Characteristics

Appearance: Brown oily liquid
Flash Point, °C (PMCC): 75 min.
Viscosity at 40°C, mm²/s: 55

Handling Information

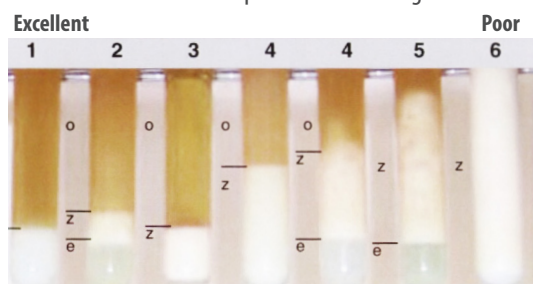
Max Handling Temp: 40°C (104°F)
Shelf Life: 12 months at 10-30°C

HiTEC® 510A Additive Delivers Excellent Frictional Performance



HiTEC® 510A Additive Delivers Outstanding Cutting Fluid Compatibility

SKC Coolant Separation Test Rating



Cutting Fluid	1 Hour	1 Day	1 Week
Sarol 471 EP	1	1	1
Avilube Matacool BLU	2	1	1
Blasocut 200 CF	1	1	1
Hysol 30FF	2	1	1
HiSpeed 400	1	1	1
Hebrolub 923 LS	1	1	1
Multan 97-10	1	1	1
Hocut M 724	5	4	4
Mobilcut 140	1	1	1
Novamet 900	4	2	2
Rhenus FU 750	1	1	1
Sitala A400	1	1	1